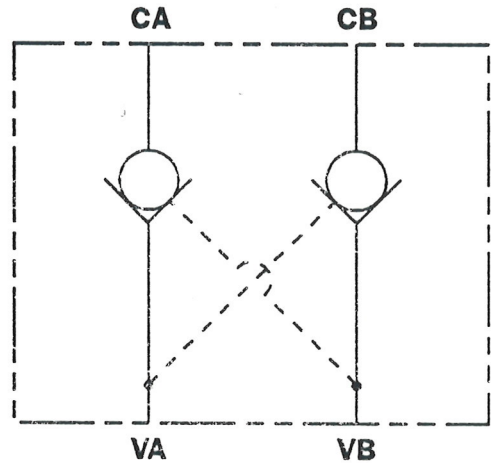
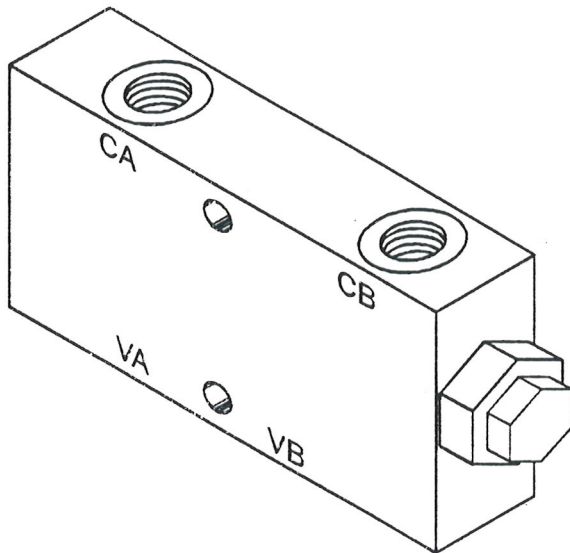




# CHECK VALVES

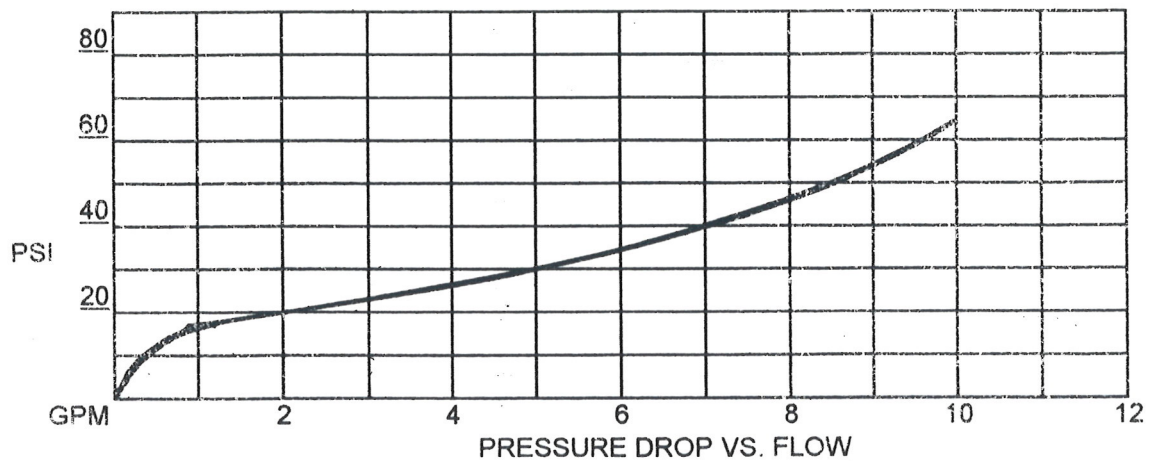
PILOT OPERATED  
INLINE MOUNTED



### SPECIFICATIONS:

FLOW: SEE PERFORMANCE DATA  
PILOT RATIO: 4:1  
MAX. PRESSURE: 3000 PSI  
SEALS: BUNA "N" STANDARD  
MOUNTING: UNRESTRICTED  
WEIGHT: 2 lbs. (APPROX.)

### PERFORMANCE DATA (TYPICAL)



CV-20  
4/95