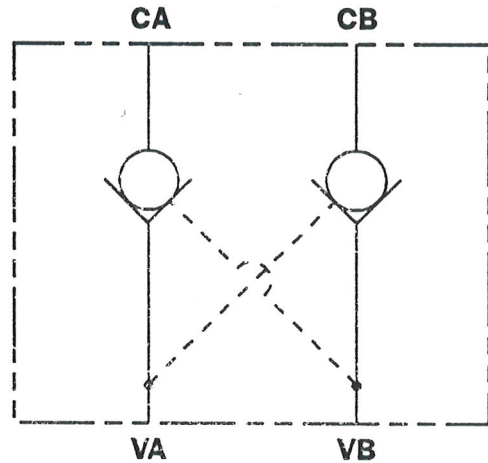
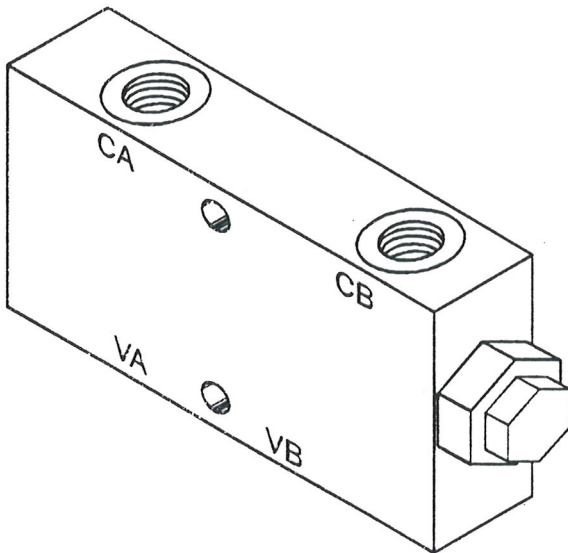




CHECK VALVES

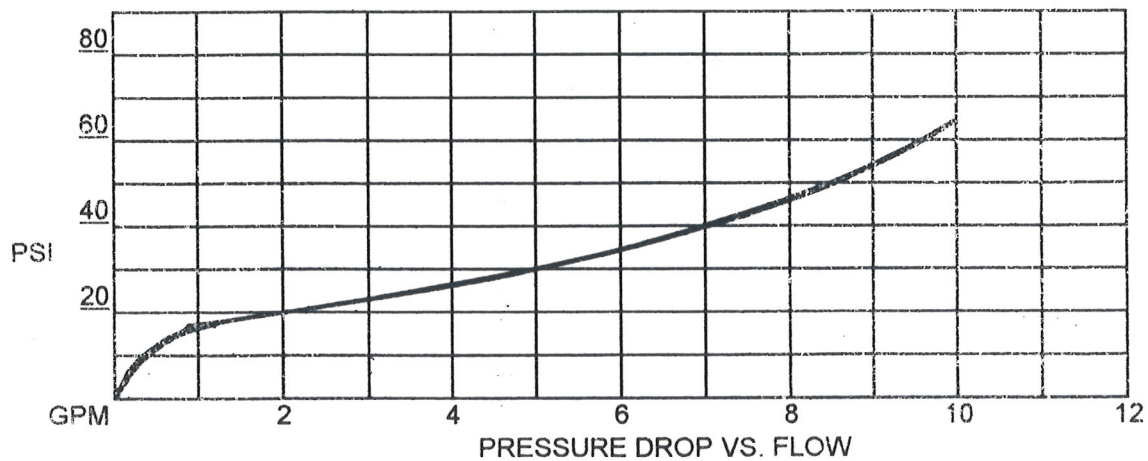
PILOT OPERATED
INLINE MOUNTED



SPECIFICATIONS:

FLOW: SEE PERFORMANCE DATA
PILOT RATIO: 4:1
MAX. PRESSURE: 3000 PSI
SEALS: BUNA "N" STANDARD
MOUNTING: UNRESTRICTED
WEIGHT: 2 lbs. (APPROX.)

PERFORMANCE DATA (TYPICAL)



CV-20
4/95